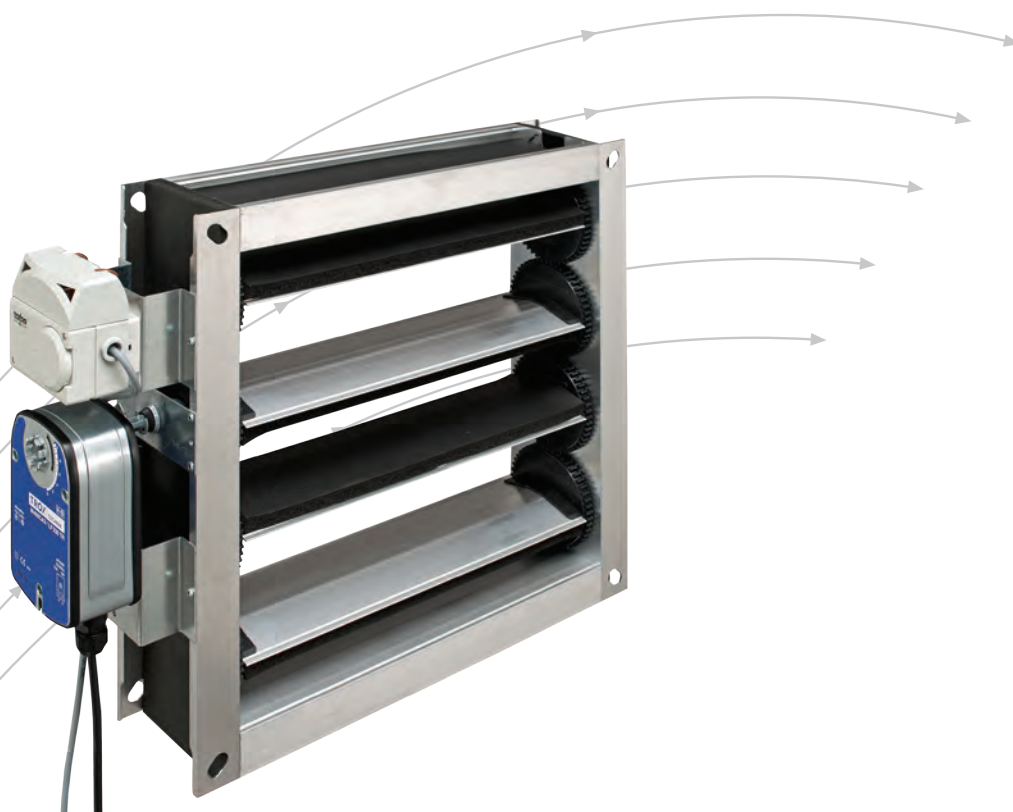


Lift shaft ventilation

JZ-Lift damper for wall installation
Type JZ-(LL)-AL-Lift



TROX[®] TECHNIK



The art of handling air

TROX HESCO Schweiz AG
Walderstrasse 125
Postfach 455
CH-8630 Rüti ZH

Tel. +41 55 250 71 11
Fax +41 55 250 73 10
www.troxhesco.ch
info@troxhesco.ch

Contents · Description · Electrical connection · Safety instructions

Contents

Description · Electrical connection ·	
Safety instructions	2
Dimensions · Installation	3
Connection diagram · Order details	4

Description

Lift shaft ventilation damper, type JZ-(LL)-AL-Lift for wall installation, consisting of a louvre damper made of aluminium (JZ-AL), with 230V (24V) spring return actuator and room thermostat with two switching points (25°C/35°C).

Options:

- Louvre damper, type JZ-LL-AL (airtight option according to EN1751/class 4) with 230V (24V) spring return actuator and room thermostat with two switching points (25°C/35°C)
- Insulated option of louvre damper and weather protection grille to prevent condensation water (frame and blades insulated with 13mm EPDM).

Electrical connection

Voltage	Type
AC/DC24V	LF24-ST (4Nm)
AC 230 V	LF230 (4NM)

Airtight damper:

AC/DC24V	SF24-ST (15NM)
AC 230 V	SF230 (15Nm)

Note:

The electrical supply may be installed in the same protection pipe as the shaft lighting.

Safety instructions

CAUTION!

Risk of injury from sharp edges and corners, ridges and thin-walled sheet metal parts!

- Proceed carefully with all work.
- Wear protective gloves, safety shoes and protective helmet.

DANGER!

Electric shock when touching live parts. Electrical equipment is under dangerous electrical voltage. Non-compliance may lead to death, serious physical harm or material damage!

- Only electrical specialists may work on electrical components.
- Switch off the power supply voltage prior to electrical work.

WARNING!

Risk of injury due to insufficient qualifications!

Improper handling may lead to considerable personal harm or material damage.

- All activities may only be carried out by suitably qualified staff.

WARNING!

Danger from incorrect use. Misuse of the product may lead to dangerous situations.

The product must not be used:

- in areas subject to explosion hazards;
- in the open air without sufficient protection against weather effects;
- in atmospheres that may have a damaging and/or corrosive effect on the product due to scheduled or unscheduled chemical reactions.

CAUTION!

Damage to the product due to improper handling. Check the device for damage and contamination prior to operation!

Improper handling may lead to considerable material damage of the product.

- Do not use any acid or abrasive cleaning agents.
- Adhesives from sticky tape may lead to colour damage.
- Excessive moisture may lead to colour damage and corrosion.
- Use only cleaning agents, greases and oils that are expressly specified.

Dimensions

Type	Dimensions (bxh in mm)	Free profile of damper (in m ²)	Free profile of weather protection grille (in m ²)	For lift shaft profile (in m ²)
JZ-(LL)-AL-....	250x200	0,040	0,030	Up to 3,0
JZ-(LL)-AL-....	400x400	0,128	0,088	All sizes
JZ-(LL)-AL-....	600x500	0,240	0,165	All sizes
JZ-(LL)-AL-....	1000x300	0,240	0,165	All sizes
JZ-(LL)-AL-....	500x400	0,160	0,110	All sizes
JZ-(LL)-AL-....	600x400	0,192	0,132	All sizes

Further dimensions upon request.

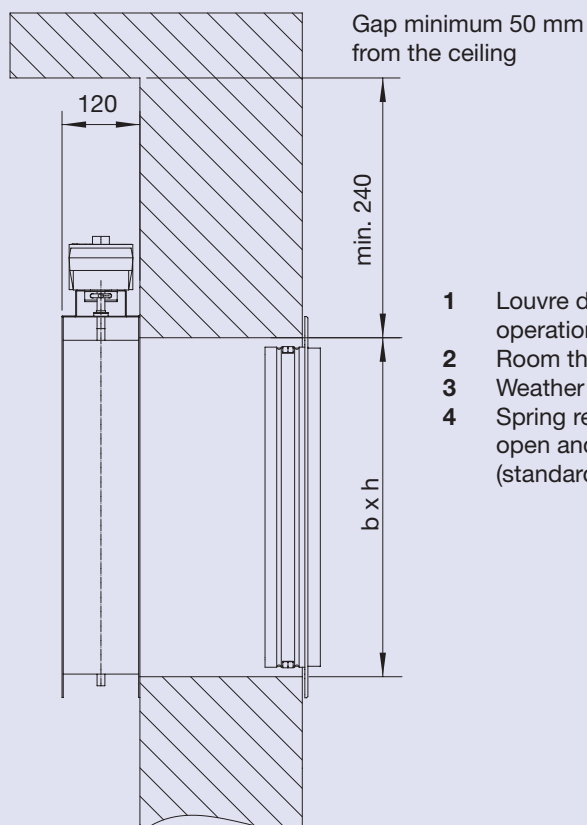
Suitable weather protection grilles:

see "Weather protection grille" product brochure, L-05-1-01e

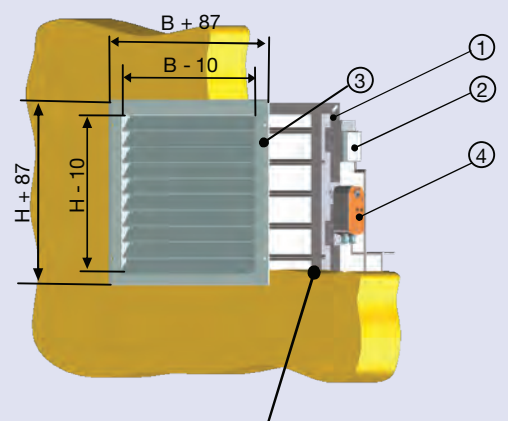
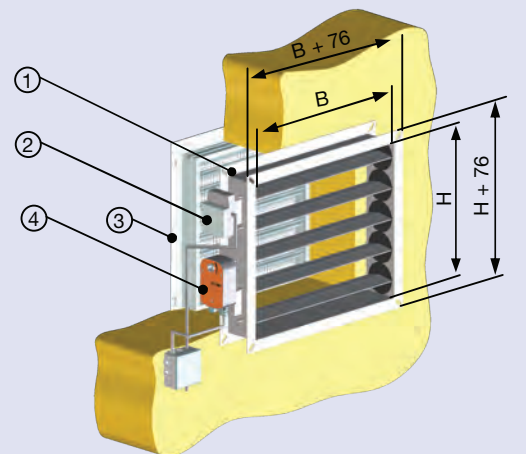
Installation

The unit goes right up to the aperture at the inner side of the shaft (wall or ceiling). Care should be taken that the aperture is not larger than the nominal dimension of the damper.

The unit is not suitable for exterior placement and it must be protected accordingly (rain cover, roof construction, etc.).

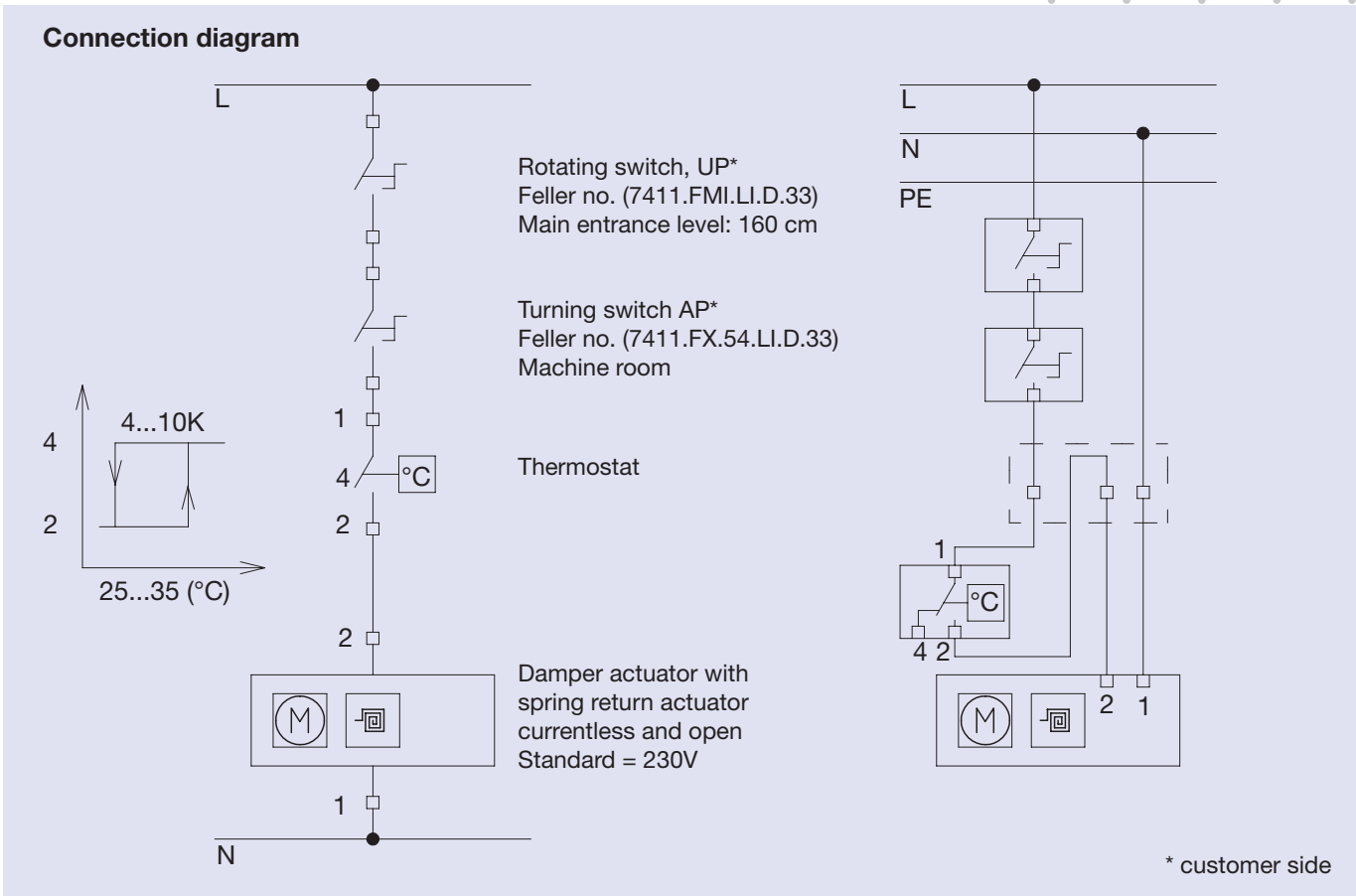


- 1 Louvre damper; operation up to 70° C
- 2 Room thermostat
- 3 Weather protection grille
- 4 Spring return actuator open and currentless (standard = 230V)

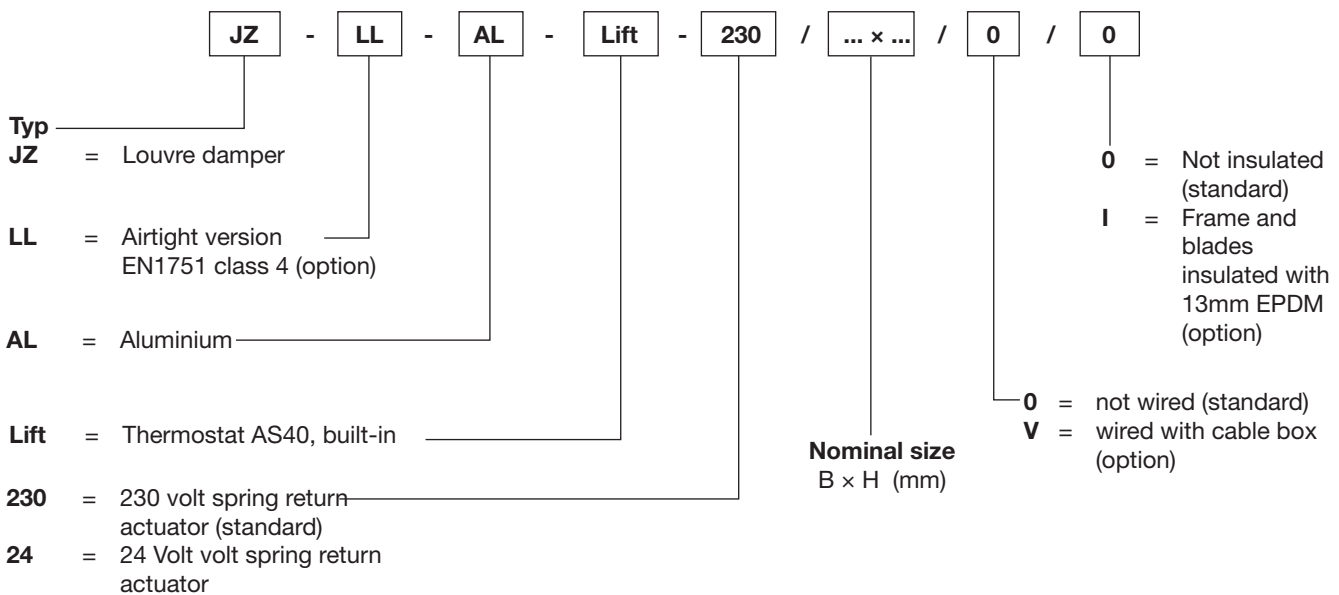


Steel plug and screws on-site

Connection diagram · Order details



Order codes



Order example

1 units JZ-AL-Lift-230 / 600 x 500 / V / I

B x H = JZ-G-Lift nominal dimension
= Order nominal dimension